

# Burglary resistance product – Burglar protection wall

**Issued to****Knauf Sverige GmbH**

SE-296 80 Åhus, Sweden

**manufacturing sites****Knauf Sverige GmbH**, Hamnen, SE-296 80 Åhus, Sweden**Knauf Sverige GmbH**, Skepperstadsvägen 3-5, SE-576 33 Sävsjö, Sweden**Product description**

Burglar protection wall consists of steel safety mesh mounted in steel rail and steel studs. For wall class 3, the construction is reinforced with 12 mm plywood or is mounted with specific locking according to instructions. See page 2-4 of this certificate for more details.

**Product name**

Nail It Safety. See page 2-4 of this certificate for more details.

**Certificate**

The products described above fulfil the requirements as a Burglar protection wall in SSF 1047:2 and RISE certification rule, SPCR 177, Certification rules for Standards issued by Swedish Theft Prevention Association (SSF), issue 2022-05-10.

**Classification according to SSF 1047:2**

Wall class 2 from both sides with steel rail, steel studs and steel safety mesh.

Wall class 3 from both sides with steel rail, steel studs, steel safety mesh and 12 mm plywood on both sides.

Wall class 3 from both sides with steel rail, steel studs and steel safety mesh with specific locking.

**Marking**

Products that comply with SPCR 177 may also be marked with RISE P-mark according to the requirements in SPCR 177 section 4.3.

**Validity**

This certificate is valid until not longer than 2026-12-12. The validity of this certificate can be verified at RISE homepage. This edition of the certificate replaces previous editions.

**Miscellaneous**

The manufacturer's factory production control is under surveillance by RISE in accordance with section 5 and 6 of SPCR 177. Other terms and conditions are set out in section 7 of SPCR 177.



Martin Tillander

*This is a translation from the Swedish original document. In the event of any dispute as to its content, the Swedish original shall take precedence.*

Certificate C900556 | issue 2 | 2024-11-05

**RISE Research Institutes of Sweden AB | Certification**

Box 857, SE-501 15 Borås, Sweden

+46 10 516 50 00 | [certifiering@ri.se](mailto:certifiering@ri.se) | [www.ri.se](http://www.ri.se)

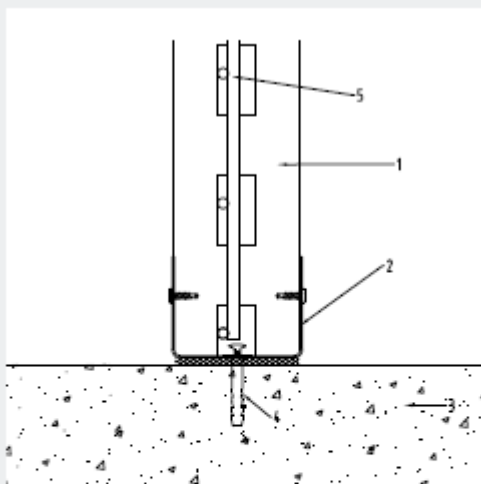
1261376

This document is the property of RISE and may not be reproduced other than in full, except with the prior written approval by RISE

Page 1 (4)

## Product details

Nail It Safety Burglar protection wall is built according to the specification below.

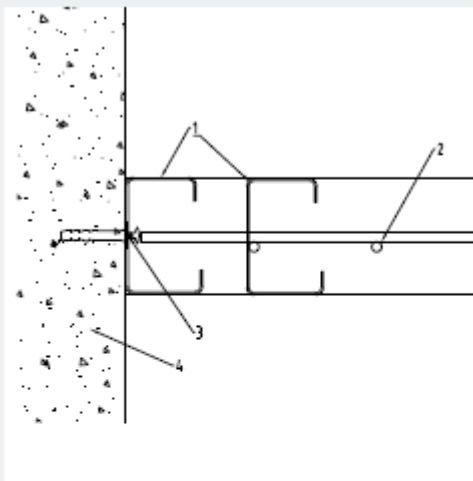


### GOLVANSLUTNING

1. Knauf Inbrottsregel CF
2. Knauf Förstärkningsskena FSK/FSKP
3. Golv
4. Infästning s300 mm. Minst utdragslast 1,8 kN (brott)
5. Knauf Inbrottsgaller IBG

Detalj fungerar även för fast takanslutning. Anslutande byggnadsdelar ej beaktade för inbrottsskydd.

Picture 1. Floor connection

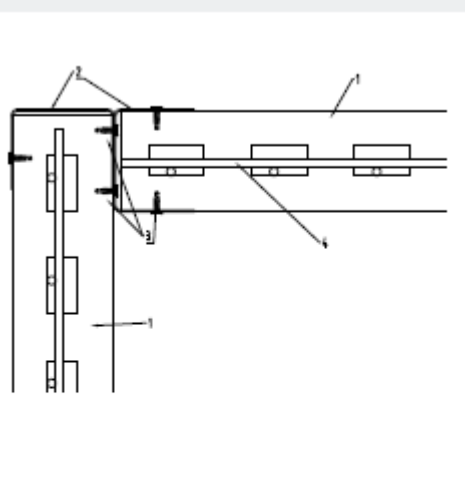


### VÄGGSTART

1. Knauf Inbrottsregel CF
2. Knauf Inbrottsgaller IBG
3. Infästning s300 mm. Min utdrag 1,8 kN (brott)
4. Vägg

Anslutande byggnadsdelar ej beaktade för inbrottsskydd.

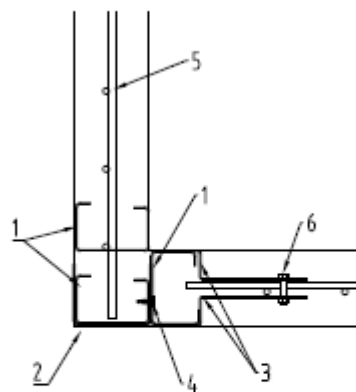
Picture 2. Wall start



### TAKANSLUTNING

1. Knauf Inbrottsregel CF
2. Knauf Förstärkningsskena FSK
3. infästning till varje regel/skena. Min utdrag 1,8 kN (brott)
4. Knauf Inbrottsgaller IBG

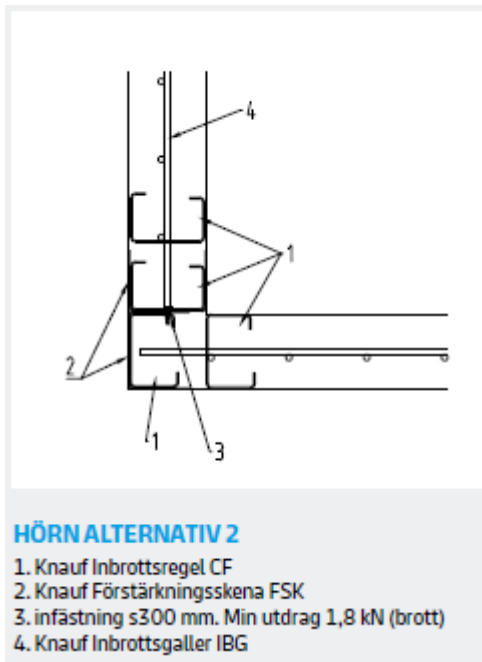
Picture 3. Ceiling connection



### HÖRN ALTERNATIV 1

1. Knauf Inbrottsregel CF
2. Knauf Förstärkningsskena FSK
3. Avslutsprofil Z, infästning s200 mm
4. Infästning s300 mm. Min utdrag 1,8 kN (brott)
5. Knauf Inbrottsgaller IBG
6. Bolt, bricka och mutter M6, s292

Picture 4. Corner alternative 1



Picture 5. Corner alternative 2



Picture 6. Locking of every 3<sup>rd</sup> iron bar for wall classes 2 and 3



Picture 7. Locking "knot" for every 8<sup>th</sup> iron bar for wall class 3.

## Conditions for installation

The assembly must be carried out according to the manufacturer's instructions in Knauf Nail It Safety - Burglary protection and the self-check document Knauf Nail It Safety Burglary Protection Check document must be completed and signed.

## Conditions for installation

Wall class	Conditions for installation
2	Every 3 <sup>rd</sup> horizontal end of the safety mesh outside burglary stud CF, is bend up or down and is locked towards the stud.
3	Every 3 <sup>rd</sup> horizontal end of the safety mesh outside burglary stud CF, is bend up or down and is locked towards the stud and reinforced with 12 mm plywood on both sides of the wall.
	Every 3 <sup>rd</sup> horizontal end of the safety mesh outside burglary stud CF, is bend up or down and is locked towards the stud and every 8 <sup>th</sup> iron bar is bend around the next safety mesh with a "knot".